

NEWTON-COLEY BED PROGRAM



HEADBOARD & FOOTBOARD STYLE OPTIONS

SQUARE- (SQ)
(Standard)



DOME- (D)



CAMEL BACK- (CB)



SCALLOPED- (S)

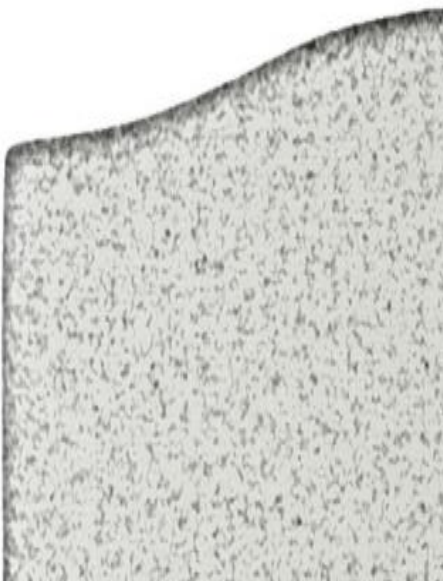


WING BED- (W)



PANEL DESIGNS

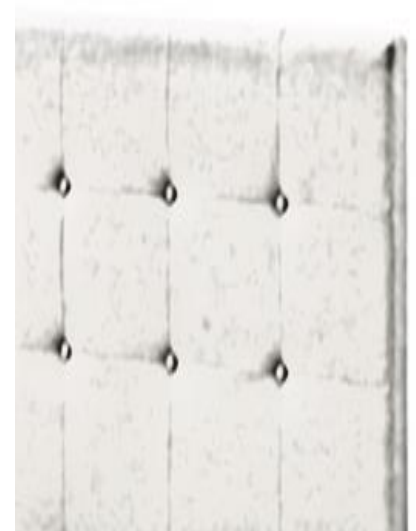
PLAIN FRONT- (P)
(Standard)



DIAMOND BUTTON TUFT- (DB)



SQUARE BUTTON TUFT- (SB)



NEWTON-COLEY BED PROGRAM



BORDER OPTIONS

UNWELTED BORDER



WELTED TOP BORDER WITH NAILS



WELTED TOP BORDER
(STANDARD)



FRONT WELTED BORDER



FRONT WELTED BORDER WITH NAILS



DOUBLE NAILHEAD FRONT BORDER



WING BED BORDER OPTIONS

UNWELTED BORDERS
(ALSO with OPT. NAILS)



DOUBLE WELTED BORDER
(STANDARD)



DOUBLE NAILHEAD BORDER
(WITH OR WITHOUT WELT)



BEDS COME IN 3 CONFIGURATIONS, AND 2 OPTIONAL HEADBOARD HEIGHTS

HEADBOARD ONLY- (HO)



HEADBOARD W/RAILS- (HR)



HEADBOARD/FOOTBOARD & RAILS- (HFR)



**HEADBOARD
HEIGHTS:**

Medium (Standard)
63"

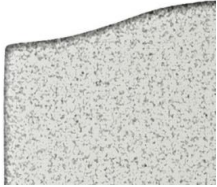
Optional- Tall
70"

Optional- Short
56"

BED PROGRAM NUMBERING SYSTEM

1- PANEL SELECTIONS:

PLAIN FRONT- (P)
(Standard)



DIAMOND BUTTON TUFT- (DB)



SQUARE BUTTON TUFT- (SB)



1 First Letter represents the Panel Selection

2. Bed Sizes Offered:

| | | | | |
|------|------|-------|------|----------|
| TWIN | FULL | QUEEN | KING | CAL-KING |
| T | F | Q | K | CK |

2 Second Letter represents the Bed Size

PTHO-SQ63

3 The Next two or three Letters represents the Bed Style.

5. The last two numbers indicate the Height

| 5. Headboard Heights: | |
|-----------------------|-----------------|
| 63" | Standard Height |
| 70" | Tall Height |
| 56" | Short Height |

4 The Next one or two Letters will represent the Headboard (& Footboard) Style

3. BED STYLES:

HEADBOARD ONLY- (HO)



HEADBOARD W/RAILS- (HR)



HEADBOARD/FOOTBOARD & RAILS- (HFR)



4. HEADBOARD (and Footboard if Applicable) Shapes:

SQUARE- (SQ)
(Standard)



CAMEL BACK- (CB)



DOME- (D)



SCALLOPED- (S)



WING BED- (W)



Standard Footboard Heights:

| | |
|----------------|-------------------|
| WING BED | 32.5" (With Feet) |
| ALL OTHER BEDS | 34" |